



# Wi-Fi on a Linux laptop

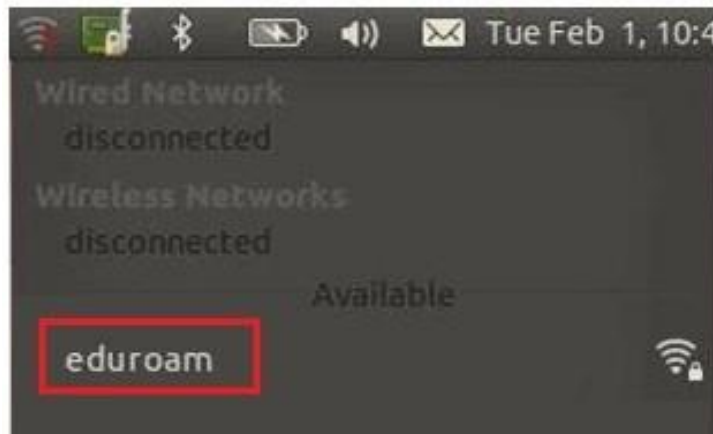
## How to connect your Linux Laptop to eduroam Wi-Fi.

These instructions are for:

- Ubuntu
- CentOS
- Scientific Linux
  
- SuSE

To connect to eduroam Wi-Fi:

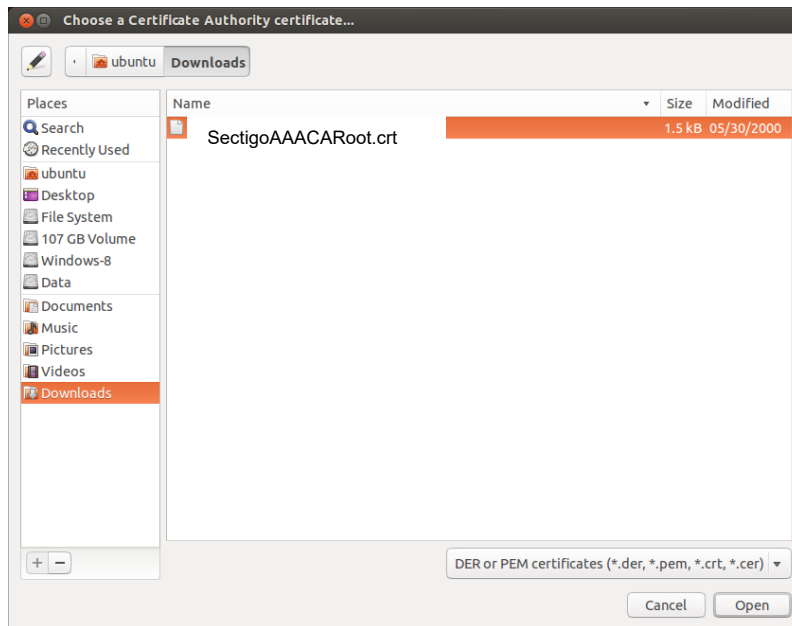
1. Please download the certificate to the users' desktop, file name "SectigoAAACARoot.crt"
2. Click the **networks** icon on your desktop panel.
3. Choose **eduroam** from the list of available networks.



4. Please enter the following information



Click on CA certificate, you will need to point this to the file moved to the user's desktop



You will then need to get the user to enter the following information

Username - Enter you credentials as follows

Student: P number@dmu.ac.uk e.g. P1234567@dmu.ac.uk,

Staff: username@dmu.ac.uk e.g. fblogg00@dmu.ac.uk

Password- The password is the same as the my DMU /Blackboard password



5. Click **Connect**.

6. You should now be connected to eduroam Wi-Fi.

Once you have connected to eduroam successfully, you should now remove **DMU-Guest** from your laptop/device, so that it does not connect to this network accidentally.